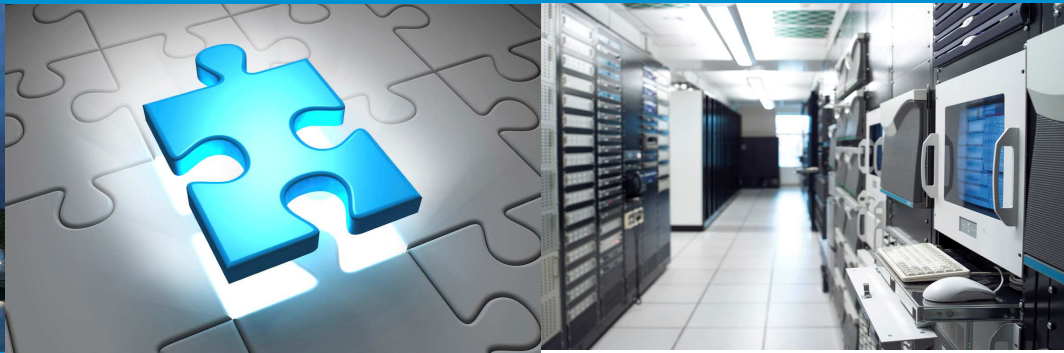




Datacom Connectivity



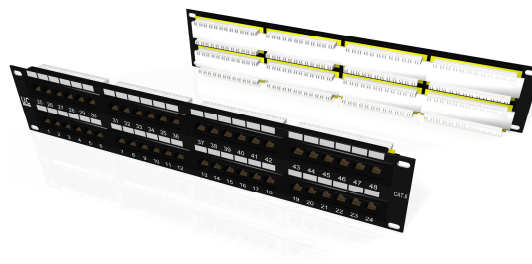
2U 48port Cat6 UTP 180° Punch down Panel

Issue date: 10-11-15

Supersedes: 02/10



Value Innovation is a way of looking at the world. By combining market insight with technological know-how and building strong, long-lasting relationships, we add value to your business with advanced communication solutions and services that are designed to last. No matter how complex your challenge, we have a product or solution that will do more than meet your needs. New applications, breakthrough cables or complete network designs - it's all part of what we call Value Innovation, and it's what drives us.



Cat6 Unshielded 48-Port Patch Panel

- Cat6 compliant performance
- 180° termination blocks for easy termination
- Compatible with 110 & Krone Punch Tools
- Lasermark labels available on request

Specification

Item	Description
Panel	SPCC, 1.5mm thickness
RJ45 jack contact material and finish	Phosphor Bronze Contact area : Min 3 mm 50 micro-inch Gold plated over Nickel colour
IDC terminal and finish	Phosphor Bronze with min, 50 micro-inch Tin plated
Wire size compatibility	22-26 AWG solid wire
Dimensions	482 x 88 x 29

Performance

IDC cap colour code	supports both wiring schemes TIA 568A & 568B
Insertion force	900 gm for 8 contacts
Retention strength	7.7kg between jack and plug
Operating temperature	-10°C to 60°C
Durability	Jack 750 cycles



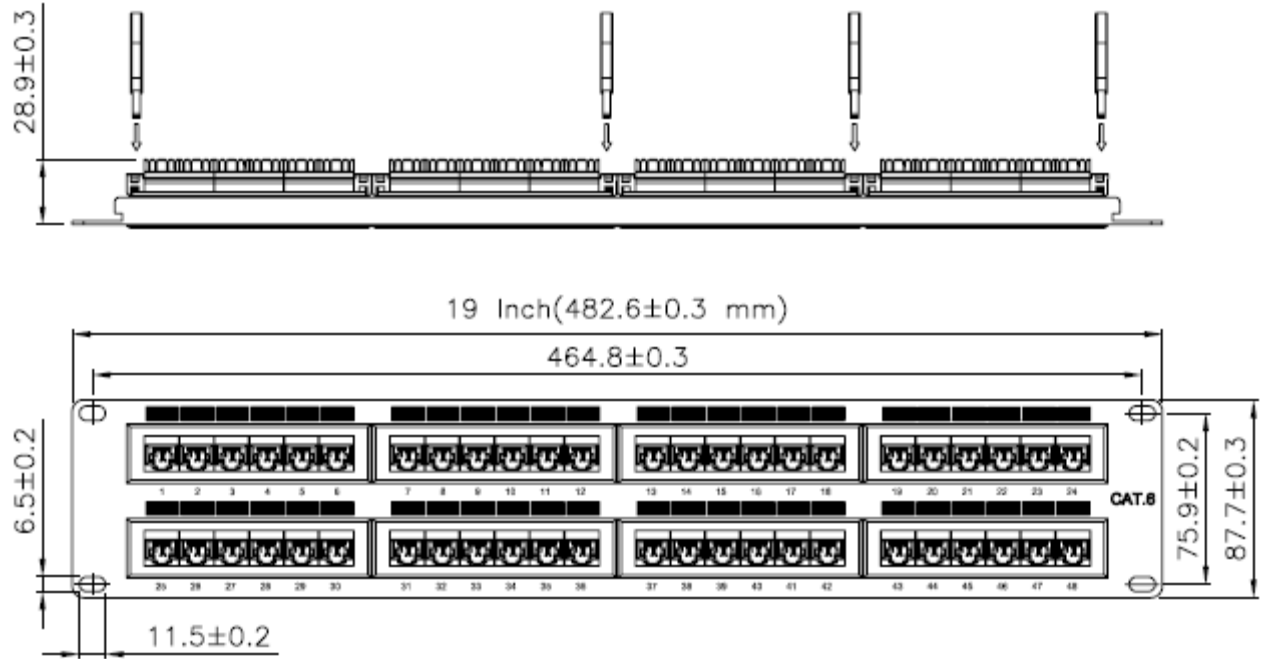
2U 48port Cat6 UTP 180° Punch down Panel

Datacom Connectivity

2U 48port Cat6 UTP 180° Punch down Panel

Issue date: 10-11-15

Supersedes: 02/10



Technical data

Material code	SAP Description	Designation	Size	Weight	Items per packaging unit
1021294	UC C400 PW TR U BK 48 2U	2U 48port Cat6 UTP 180°Punch Down Panel	482 x 88 x 29	985 g	1 or 20

Related Products

Material code	SAP Description	Designation	Size	Weight	Items per packaging unit
1021314		Support Bar for 180° Patch Panel		267 g	1 or 20